



# U.S. & CA Insurance Collision Repair Catalog

April 2022



Quality Aftermarket Parts

Find a distributor near you at: [www.peterbilt.com](http://www.peterbilt.com) and [www.TRPparts.com](http://www.TRPparts.com)  
Nationwide 1 Year Warranty • Distributed by PACCAR Parts



## **Quality Aftermarket Parts and Components**

Welcome to the Peterbilt Insurance Collision Repair Catalog. Inside you will find a selection of repair parts that are commonly used in front end collisions. These parts will help reduce repair cost and provide an opportunity to retain resale value.

You will find a wide selection of grilles, hoods, bumpers, fenders, glass, fuel tanks and more. Each part is designed to either OE or Aftermarket standards and engineered for precision fit. Parts are stocked in conveniently located warehouses throughout the United States for quick delivery and reduced downtime. There are no hidden surprises in the pricing, and freight to the dealer location is included on product ordered from our network of distribution centers.

All products feature a full warranty backed by PACCAR Parts and a nationwide network of authorized retailers. For the retailer nearest you, visit

**[www.peterbilt.com](http://www.peterbilt.com)**

# CONTENTS



<b>PETERBILT 357-378</b> .....	4
<b>PETERBILT 379</b> .....	8
<b>FREIGHTLINER CASCADIA</b> .....	12
<b>FREIGHTLINER COLUMBIA</b> .....	15
<b>FREIGHTLINER M2</b> .....	16
<b>INTERNATIONAL PROSTAR</b> .....	18
<b>VOLVO VNL</b> .....	20
<b>PETERBILT FUEL TANKS</b> .....	22
<b>TRP FUEL TANKS</b> .....	23
<b>PETERBILT AIR CLEANERS</b> .....	26
<b>TRP AIR CLEANERS</b> .....	27
<b>TRP GRILLES</b> .....	28
<b>TRP HOODS</b> .....	29
<b>TRP DOOR AND WINDOW HANDLES</b> .....	33
<b>TRP EXHAUST</b> .....	37
<b>TRP FENDERS</b> .....	38
<b>TRP GRILLE GUARDS</b> .....	39
<b>TRP HOOD SPRINGS</b> .....	40
<b>TRP METAL BUMPERS</b> .....	42
<b>TRP MIRRORS</b> .....	43
<b>TRP COOLING</b> .....	44
<b>TRP RUBBER COMPONENTS</b> .....	45
<b>TRP WINDSHIELDS</b> .....	46

**HOOD**



**PART NO.**  
AMHPB003-C  
**DESCRIPTION**  
Peterbilt 357-378  
SFA 97&UP without  
Grille Assembly

**HOOD**



**PART NO.**  
AMHPB004-C  
**DESCRIPTION**  
Peterbilt 357-378 SFA  
97&UP with Grille Assembly

**HOOD**



**PART NO.**  
RPHD002  
**DESCRIPTION**  
357-378 Hood,  
119" 2001-2007

**HOOD**



**PART NO.**  
RPHD004  
**DESCRIPTION**  
357-378 Hood,  
119" B 2001-2004

**HOOD**



**PART NO.**  
RPHD004  
**DESCRIPTION**  
357-378 Hood,  
119" 2001-2004

**HOOD**



**PART NO.**  
RPHD005  
**DESCRIPTION**  
357-378 Hood, 119"  
FEPTO 97&UP

**CHARGE AIR COOLER**



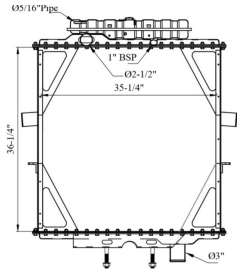
**PART NO.**  
CAC61-1024TRP  
**DESCRIPTION**  
Charge Air Cooler,  
Peterbilt 357, 378, 379

**CHARGE AIR COOLER**



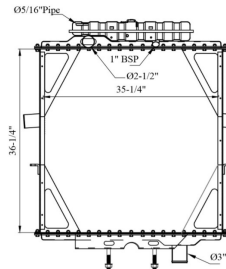
**PART NO.**  
CAC61-1553TRP  
**DESCRIPTION**  
Charge Air Cooler,  
Peterbilt 357, 378, 379

**RADIATOR**



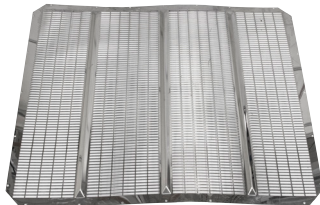
**PART NO.**  
RAD42-10322TRP  
**DESCRIPTION**  
Radiator, Peterbilt 357,  
375 Series

**RADIATOR**



**PART NO.**  
RAD42-10334TRP  
**DESCRIPTION**  
Radiator, Peterbilt 357,  
375 Series

**GRILLE**



**PART NO.**  
RPG001  
**DESCRIPTION**  
Grille-Hood 119"

**GRILLE  
LEFT SIDE**



**PART NO.**  
RPGP002  
**DESCRIPTION**  
Grille - Left Side Shell

**GRILLE  
RIGHT SIDE**



**PART NO.**  
RPGP003  
**DESCRIPTION**  
Grille - Right Side Shell

**GRILLE MOLDING**



**PART NO.**  
RPGP011  
**DESCRIPTION**  
Grille - Lower Molding Trim

**BUMPER**



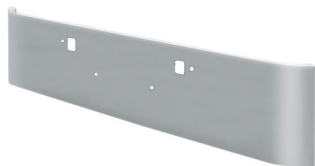
**PART NO.**  
TX08C0020-06TS  
**DESCRIPTION**  
Bumper 18" 388,389,365  
2007&UP

**BUMPER**



**PART NO.**  
TX08C0020-02TS  
**DESCRIPTION**  
Bumper-Peterbilt  
378 & 379 Conventional 16"  
TPR Roll End

### BUMPER



**PART NO.**  
TX08V0010-06TS  
**DESCRIPTION**  
Bumper 18" 388,389,365  
2007&UP

### HEADLAMP ASSEMBLY LEFT HAND



**PART NO.**  
16-07641L  
**DESCRIPTION**  
Headlamp Assembly-  
Halogen, LH

### HEADLAMP ASSEMBLY RIGHT HAND



**PART NO.**  
16-07641R  
**DESCRIPTION**  
Headlamp Assembly-  
Halogen, RH

### MIRROR



**PART NO.**  
EB50SS  
**DESCRIPTION**  
Convex Mirror

### MIRROR LEFT HAND



**PART NO.**  
TM915L  
**DESCRIPTION**  
Mirror - Fender Mount, LH

### MIRROR RIGHT HAND



**PART NO.**  
TM915R  
**DESCRIPTION**  
Mirror - Fender Mount, RH

### MIRROR LEFT HAND



**PART NO.**  
MRKP01L  
**DESCRIPTION**  
Mirror with Defrost, and  
Temp Sensor, Black, LH

### MIRROR RIGHT HAND



**PART NO.**  
MRKP01R  
**DESCRIPTION**  
Mirror with Defrost, and  
Temp Sensor, Black, RH



**MIRROR**



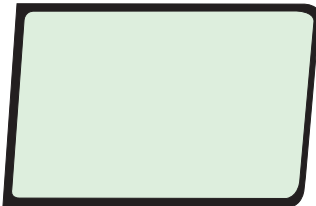
**PART NO.**  
SA716S  
**DESCRIPTION**  
West Coast Mirror

**2 PIECE CURVED WINDSHIELD  
RIGHT HAND**



**PART NO.**  
DW1036-10  
DW1036-30  
**DESCRIPTION**  
Peterbilt 2 Piece Curved  
Windshield, RH

**2 PIECE CURVED WINDSHIELD  
LEFT HAND**



**PART NO.**  
DW1037-10  
DW1037-30  
**DESCRIPTION**  
Peterbilt 2 Piece Curved  
Windshield, LH

**HOOD**



**PART NO.**  
AMHPB001-C  
**DESCRIPTION**  
Peterbilt 379 Fiberglass  
88-06 with Stainless Grille

**HOOD**



**PART NO.**  
AMHPB002-C  
**DESCRIPTION**  
Peterbilt 379 Fiberglass  
88-06 with Grille &  
Wide Fender

**HOOD**



**PART NO.**  
AMHPB007-C  
**DESCRIPTION**  
Peterbilt 379 Aluminum  
88-06 with Grille and  
Fender

**CHARGE AIR COOLER**



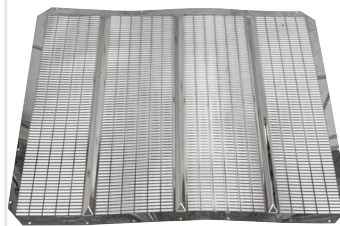
**PART NO.**  
CAC61-1024TRP  
**DESCRIPTION**  
Charge Air Cooler,  
Peterbilt 357, 378, 379

**CHARGE AIR COOLER**



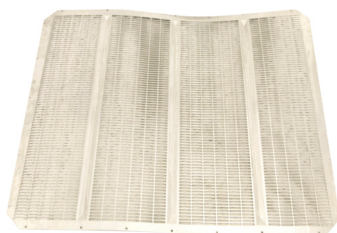
**PART NO.**  
CAC61-1553TRP  
**DESCRIPTION**  
Charge Air Cooler,  
Peterbilt 357, 378, 379

**GRILLE**



**PART NO.**  
RPG001  
**DESCRIPTION**  
Grille 119"

**GRILLE**



**PART NO.**  
RPG003  
**DESCRIPTION**  
Grille 127"

**GRILLE  
RIGHT SIDE**



**PART NO.**  
RPGP006  
**DESCRIPTION**  
Grille - Right Side Shell  
127"





**GRILLE  
LEFT SIDE**



**PART NO.**  
RPGP007

**DESCRIPTION**  
Grille - Left Side Shell 127"

**GRILLE  
RIGHT SIDE**



**PART NO.**  
RPGP008

**DESCRIPTION**  
Grille - Right Side Shell 119"

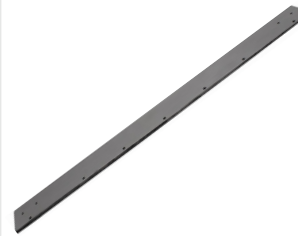
**GRILLE  
LEFT SIDE**



**PART NO.**  
RPGP009

**DESCRIPTION**  
Grille - Left Side Shell 119"

**GRILLE SHELL**



**PART NO.**  
RPGP010

**DESCRIPTION**  
Grille Bottom Shell  
119" & 127"

**GRILLE MOLDING**



**PART NO.**  
RPGP011

**DESCRIPTION**  
Grille Lower Molding  
119" & 127"

**GRILLE MOLDING**



**PART NO.**  
RPGP012

**DESCRIPTION**  
Grille Lower Molding 127"

**CROWN ASSEMBLY**



**PART NO.**  
CR03508

**DESCRIPTION**  
Crown Assembly - Steel

**CROWN**



**PART NO.**  
CR03513

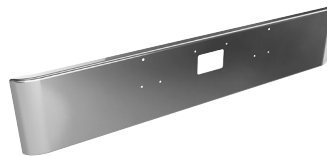
**DESCRIPTION**  
Crown-Hood 127" Steel

**BUMPER**



**PART NO.**  
TU08C0020-02TS  
**DESCRIPTION**  
10 Gauge Tapered Bumper  
1987 & Newer

**BUMPER**



**PART NO.**  
TU08C0020-06TS  
**DESCRIPTION**  
18" Square 10 Gauge  
Bumper 1987 & Newer

**FRONT FENDER  
LEFT HAND**



**PART NO.**  
FN4905L  
**DESCRIPTION**  
Aluminum Fender  
LH

**FRONT FENDER  
LEFT HAND**



**PART NO.**  
FN4905R  
**DESCRIPTION**  
Aluminum Fender  
RH

**MIRROR**



**PART NO.**  
SA716S  
**DESCRIPTION**  
West Coast Mirror

**MIRROR  
LEFT HAND**



**PART NO.**  
TM915L  
**DESCRIPTION**  
Mirror - Fender Mount, LH

**MIRROR  
RIGHT HAND**



**PART NO.**  
TM915R  
**DESCRIPTION**  
Mirror - Fender Mount, RH

**2 PIECE CURVED WINDSHIELD  
RIGHT HAND**



**PART NO.**  
DW1036-10  
DW1036-30  
**DESCRIPTION**  
Peterbilt 2 Piece Curved  
Windshield, RH



**2 PIECE CURVED WINDSHIELD  
LEFT HAND**



**PART NO.**

DW1037-10

DW1037-30

**DESCRIPTION**

Peterbilt 2 Piece Curved  
Windshield, LH

**HOOD**



**PART NO.**  
AMHFL012-C  
**DESCRIPTION**  
Cascadia 125 Long Hood,  
2008-2018

**HOOD**



**PART NO.**  
AMHFL013-C  
**DESCRIPTION**  
Cascadia 125 Long Hood  
with Hinge Bar, 2008-2018

**GRILLE**



**PART NO.**  
GRFLCAS08  
**DESCRIPTION**  
Grille Cascadia with  
Bugscreen, 2008-2018

**RADIATOR**



**PART NO.**  
RAD42-10482TRP  
**DESCRIPTION**  
Radiator-FI Cascadia 08-17

**MIRROR**



**PART NO.**  
MRFL01L  
**DESCRIPTION**  
Cab Mirror with Defrost  
and Temp Sensor, Black,  
LH

**MIRROR**



**PART NO.**  
MRFL01R  
**DESCRIPTION**  
Cab Mirror with Defrost,  
Black, RH

**MIRROR**



**PART NO.**  
MRFL01L-C  
**DESCRIPTION**  
Cab Mirror with Defrost  
and Temp Sensor,  
Chrome, LH

**MIRROR**



**PART NO.**  
MRFL01R-C  
**DESCRIPTION**  
Cab Mirror with Defrost,  
Black, RH

**HOOD MIRROR**



**PART NO.**  
MRFL02L  
**DESCRIPTION**  
Hood Mirror, Black, LH

**HOOD MIRROR**



**PART NO.**  
MRFL02R  
**DESCRIPTION**  
Hood Mirror, Black, RH

**HOOD MIRROR**



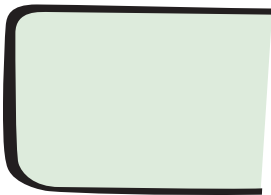
**PART NO.**  
MRFL02L-C  
**DESCRIPTION**  
Hood Mirror, Chrome, LH

**HOOD MIRROR**



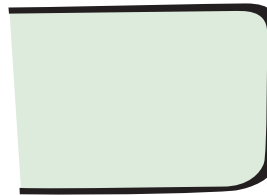
**PART NO.**  
MRFL02R-C  
**DESCRIPTION**  
Hood Mirror, Chrome, RH

**2 PIECE WINDSHIELD  
RIGHT HAND**



**PART NO.**  
DW1731-30  
DW1731-5  
**DESCRIPTION**  
Cascadia Conventional  
Cab, Two-Piece  
Windshield, RH

**2 PIECE WINDSHIELD  
LEFT HAND**



**PART NO.**  
DW1732-30  
DW1732-5  
**DESCRIPTION**  
Cascadia Conventional  
Cab, Two-Piece  
Windshield, LH

**1 PIECE WINDSHIELD**



**PART NO.**  
DW2409-20  
DW2409-5  
**DESCRIPTION**  
Cascadia Conventional  
Cab One-Piece  
Windshield with LDWS  
Bracket

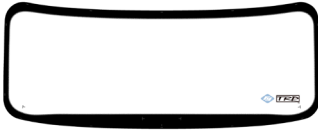
**1 PIECE WINDSHIELD**



**PART NO.**  
DW2419-20  
DW2419-5  
**DESCRIPTION**  
Cascadia Conventional  
Cab One-Piece  
Windshield



**1 PIECE WINDSHIELD**



**PART NO.**

DW2649-15

DW2649-5

**DESCRIPTION**

Cascadia Conventional  
Cab One-Piece  
Windshield with Bracket



**HOOD**



**PART NO.**  
AMHFL003-C  
**DESCRIPTION**  
Columbia CL120 Hood,  
2001-2009

**HOOD**



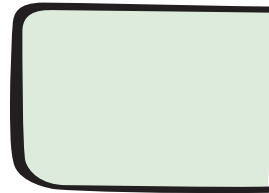
**PART NO.**  
AMHFL004-C  
**DESCRIPTION**  
Columbia CL120 Hood  
with Hinge Bar, 2001-2009

**GRILLE**



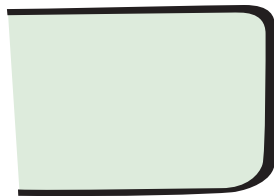
**PART NO.**  
GRFLC0L0211  
**DESCRIPTION**  
Grille, Chrome with Black

**2 PIECE CURVED WINDSHIELD  
RIGHT HAND**



**PART NO.**  
DW1302-30  
DW1302-5  
**DESCRIPTION**  
Conventional Cab  
1996 & Up, RH

**2 PIECE CURVED WINDSHIELD  
LEFT HAND**



**PART NO.**  
DW1303-30  
DW1303-5  
**DESCRIPTION**  
Conventional Cab  
1996 & Up, LH

**HOOD**

**PART NO.**  
AMHFL014-C  
**DESCRIPTION**  
M2 112 Hood 2003&Up

**SURROUND**

**PART NO.**  
GRFLBCM2CR  
**DESCRIPTION**  
Surround, M2 112, Chrome with Bug Screen

**GRILLE**

**PART NO.**  
GRFLBCM2CRGR  
**DESCRIPTION**  
Grille, M2 112, Chrome with Bug Screen

**SURROUND**

**PART NO.**  
GRFLBCM2PA  
**DESCRIPTION**  
Surround, M2 112, Painted w/Bug Screen

**GRILLE**

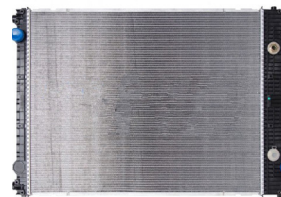
**PART NO.**  
GRFLBCM2PAGR  
**DESCRIPTION**  
Grille, M2 112, Painted with Bug Screen

**RADIATOR**

**PART NO.**  
RAD42-10359TRP  
**DESCRIPTION**  
Radiator-FI M2 03-07/  
Acterra 05-07

**RADIATOR**

**PART NO.**  
RAD42-10523TRP  
**DESCRIPTION**  
Radiator-FI M2 08-10/  
L7500 08-10

**RADIATOR**

**PART NO.**  
RAD42-10545TRP  
**DESCRIPTION**  
Radiator-Freightliner M2  
10-13





**1 PIECE WINDSHIELD**



**PART NO.**

DW1494-20

DW1494-5

**DESCRIPTION**

One Piece Windshield,  
Encapsulated with Paint  
Band

**HOOD**



**PART NO.**  
AMHNV018-C  
**DESCRIPTION**  
ProStar Long 56" Hood  
2008-2018

**HOOD**



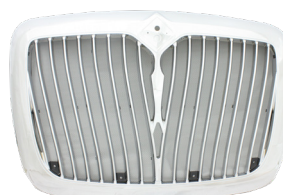
**PART NO.**  
AMHNV019-C  
**DESCRIPTION**  
ProStar Long 56" Hood  
with Hinge Bar, 2008-2018

**BUMPER**



**PART NO.**  
TX0452011-18TF  
**DESCRIPTION**  
Bumper Intl Prostar Fixed  
Mnt, Fog, Chrome

**GRILLE**



**PART NO.**  
GR1NTPR008  
**DESCRIPTION**  
Grille - Chrome with Bug  
Screen, 2008-2018

**RADIATOR**



**PART NO.**  
RAD42-10554TRP  
**DESCRIPTION**  
Radiator-Navistar Intl  
Prostar 08-10

**RADIATOR**



**PART NO.**  
RAD42-10553TRP  
**DESCRIPTION**  
Radiator-Navistar Intl  
Prostar 12-13

**1 PIECE WINDSHIELD**



**PART NO.**  
DW1765-20  
DW1765-5  
**DESCRIPTION**  
Windshield, Encapsulated,  
Heated, One-Piece

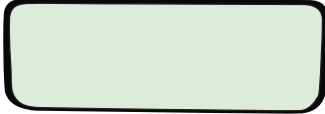
**1 PIECE WINDSHIELD**



**PART NO.**  
DW2550-20  
**DESCRIPTION**  
Windshield ProStar  
One-Piece



**1 PIECE WINDSHIELD**



**PART NO.**  
DW1685-20  
DW1685-5

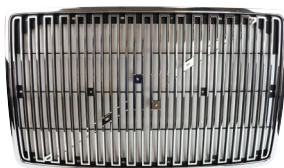
**DESCRIPTION**  
Windshield, Encapsulated,  
Solar, One-Piece

**HOOD**

**PART NO.**  
AMHVL001-C  
**DESCRIPTION**  
VNL Hood 1998-2002

**HOOD**

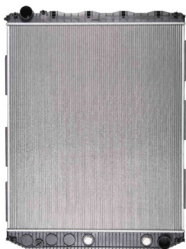
**PART NO.**  
AMHVL002-C  
**DESCRIPTION**  
VNL Hood 2004&Up

**GRILLE**

**PART NO.**  
GRV0LVNL  
**DESCRIPTION**  
Grille, Chrome with Bug  
Screen, 1998-2003

**GRILLE**

**PART NO.**  
GRV0LVNL04  
**DESCRIPTION**  
Grille, Chrome with Bug  
Screen, 2004-2018

**RADIATOR**

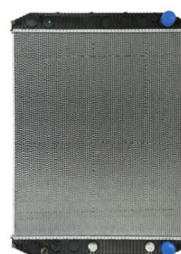
**PART NO.**  
RAD42-10289PDC  
**DESCRIPTION**  
Radiator-Volvo Mack/VN  
Series 08-15

**RADIATOR**

**PART NO.**  
RAD42-10289TRP  
**DESCRIPTION**  
Radiator-Volvo Mack/VN  
Series 08-15

**RADIATOR**

**PART NO.**  
RADS10289TRP  
**DESCRIPTION**  
Radiator-Volvo Mack/VN  
Series 08-15

**RADIATOR**

**PART NO.**  
RAD42-10308TRP  
**DESCRIPTION**  
Radiator-Volvo VNL 08-10,  
VNM 08-10



**1 PIECE WINDSHIELD**



**PART NO.**  
DW1308-20  
DW1308-5

**DESCRIPTION**  
VN Series Conventional  
Cab, One-Piece  
Windshield

**1 PIECE WINDSHIELD**



**PART NO.**  
DW1525-20  
DW1525-5

**DESCRIPTION**  
VN Series Conventional  
Cab, One-Piece  
Windshield, Solar

**1 PIECE WINDSHIELD**



**PART NO.**  
DW2433-25  
DW2433-10

**DESCRIPTION**  
VN Series Conventional  
Cab, One-Piece  
Windshield with LDWS  
Bracket

# OE QUALITY TANKS

Manufactured to meet all Federal government safety requirements for side mounted fuel tanks.

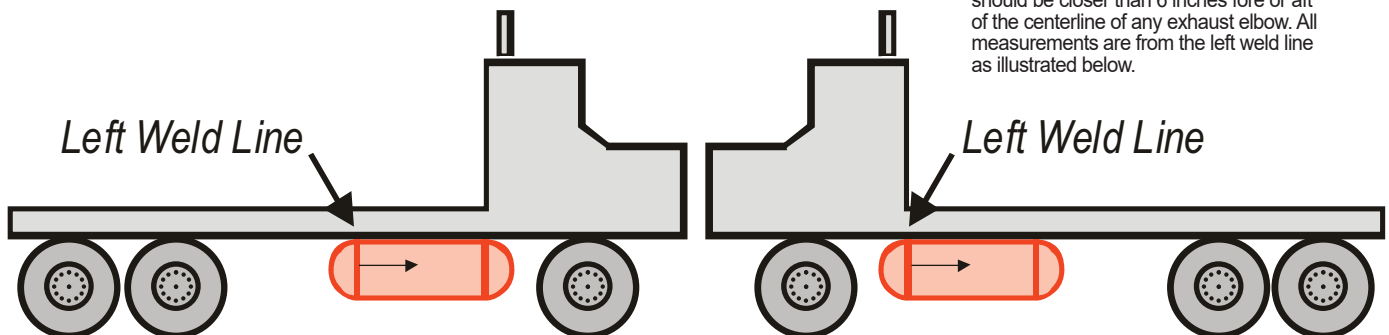


## KENWORTH FUEL TANKS

Part#	Diam.	Length (in.)	Capacity (gal)	Sending Unit (in)	Heater Fitting	Filler	Vent (in.)
RKFT001	24.5	38.5	75	16.85	None	32	2.95 Left of Center
RKFT002	24.5	38.5	75	19.13	None	4	2.95 Left of Center
RKFT003	24.5	50	100	28.34	None	43.5	0 on center
RKFT004	24.5	50	100	23.74	None	4	3.94 Right of Center
RKFT005	24.5	60.55	120	29	None	54	3.94 Right of Center
RKFT006	24.5	60.55	120	29	None	4	3.93 Right of Center
RKFT007	24.5	74.5	150	52.87	None	4	7.87 Right of Center
RKFT008	24.5	74.5	150	19.13	None	70	7.87 Left of Center

**SPECIAL NOTE:**

No portion of the filler, boss or multi-boss should be closer than 6 inches fore or aft of the centerline of any exhaust elbow. All measurements are from the left weld line as illustrated below.





## Quality Aftermarket Parts

Suggested prices subject to change without notice. Images for illustration purposes only.

## TRP FUEL TANKS



For help with your TRP fuel tank installation reach out to our technical team at [SUPPORT@TRPPARTS.COM](mailto:SUPPORT@TRPPARTS.COM)

## TRP FUEL TANKS

TRP	Model	Dia. (D) in/cm	Capacity Gal/Liters	Overall Length (C) in/cm	Fill Neck (A) in/cm	Draw Return Cluster in/cm	Sending Unit (B) in/cm	Vent in/cm	Filler Neck Location	Tank Loc
FT0103101	Freightliner	23/58	100/379	61/154	30/77	30/77	27/70	32/82	Center	LH
FT0103102	Freightliner	23/58	100/379	61/154	30/77	30/77	27/70	32/82	Center	RH
FT0103103	Freightliner	23/58	100/379	61/154	20/51	20/51	17/43	22/56	Right	RH
FT0103104	Freightliner	23/58	100/379	61/154	20/51	20/51	17/43	22/56	Left	LH
FT0105101	Freightliner	23/58	120/454	73/185	36/92	36/92	33/85	38/98	Center	LH
FT0105102	Freightliner	23/58	120/454	73/185	36/92	36/92	33/85	38/98	Center	RH
FT0105103	Freightliner	23/58	120/454	73/185	20/51	20/51	17/43	22/56	Right	RH
FT0105104	Freightliner	23/58	120/454	73/185	20/51	20/51	17/43	22/56	Left	LH
FT0108101	Freightliner	23/58	140/530	85/215	42/108	42/108	39/100	44/113	Center	LH
FT0108102	Freightliner	23/58	140/530	85/215	42/108	42/108	39/100	44/113	Center	RH
FT0108103	Freightliner	23/58	140/530	85/215	20/51	20/51	17/43	22/56	Right	RH
FT0108104	Freightliner	23/58	140/530	85/215	20/51	20/51	17/43	22/56	Left	LH
FT0403503	International	26/66	100/379	48/122	24/62	15/39	28/72	24/60	Right	RH
FT0403504	International	26/66	100/379	48/122	24/60	15/39	20/50	24/60	Left	LH
FT0406503	International	26/66	125/473	60/151	36/91	15/39	40/101	24/60	Right	RH
FT0406504	International	26/66	125/473	60/151	24/60	15/39	20/50	24/60	Left	LH
FT0409503	International	26/66	150/568	71/181	48/121	15/39	52/131	24/60	Right	RH
FT0409504	International	26/66	150/568	71/181	24/60	15/39	20/50	24/60	Left	LH
FT0202205	Kenworth	24.5/62	75/284	40/103	20/51	20/51	20/51	23/59	Center	RH
FT0202205	Kenworth	24.5/62	75/284	40/103	20/51	20/51	20/51	23/59	Center	LH
FT0202206	Kenworth	24.5/62	75/284	40/103	8/19	23/57	23/57	17/44	Right	RH
FT0202207	Kenworth	24.5/62	75/284	40/103	8/19	23/57	23/57	17/44	Left	LH
FT0202206	Kenworth	24.5/62	75/284	40/103	33/84	18/45	18/45	23/59	Right	LH
FT0202207	Kenworth	24.5/62	75/284	40/103	33/84	18/45	18/45	23/59	Left	RH
FT0203205	Kenworth	24.5/62	100/379	54/136	27/68	27/68	27/68	31/78	Center	RH

Note: See dealer for specific tank measurements. If the part number ends in LH or RH, then the tank is specifically for either the left hand (LH) or right hand (RH) side, respectively. LH = Driver's Side RH = Passenger Side. If the part number ends in LF or RF then the tank can be located on either side of the truck. LF for Driver's Side (the A LH dimension would be toward the front of the truck) RF for Passenger's Side (the A RH dimension would be toward the front of the truck) The overall length measurement (C dimension) is from end cap to end cap.



TRP	Model	Dia. (D) in/cm	Capacity Gal/Liters	Overall Length (C) in/cm	Fill Neck (A) in/cm	Draw Return Cluster in/cm	Sending Unit (B) in/cm	Vent in/cm	Filler Neck Location	Tank Loc
FT0203205	Kenworth	24.5/62	100/379	54/136	27/68	27/68	27/68	31/78	Center	LH
FT0203206	Kenworth	24.5/62	100/379	54/136	44/113	25/63	25/63	31/78	Right	LH
FT0203207	Kenworth	24.5/62	100/379	54/136	44/113	25/63	25/63	31/78	Left	RH
FT0203206	Kenworth	24.5/62	100/379	54/136	9/24	29/74	29/74	23/58	Right	RH
FT0203207	Kenworth	24.5/62	100/379	54/136	9/24	29/74	29/74	23/58	Left	LH
FT0205205	Kenworth	24.5/62	120/454	64/163	32/82	32/82	32/82	36/92	Center	RH
FT0205205	Kenworth	24.5/62	120/454	64/163	32/82	32/82	32/82	36/92	Center	LH
FT0205206	Kenworth	24.5/62	120/454	64/163	9/24	34/87	34/87	28/72	Right	RH
FT0205207	Kenworth	24.5/62	120/454	64/163	9/24	34/87	34/87	28/72	Left	LH
FT0205206	Kenworth	24.5/62	120/454	64/163	55/140	30/76	30/76	36/92	Right	LH
FT0205207	Kenworth	24.5/62	120/454	64/163	55/140	30/76	30/76	36/92	Left	RH
FT0209205	Kenworth	24.5/62	150/568	80/203	40/102	40/102	40/102	46/118	Center	RH
FT0209205	Kenworth	24.5/62	150/568	80/203	40/102	40/102	40/102	46/118	Center	LH
FT0209206	Kenworth	24.5/62	150/568	80/203	69/175	54/137	54/137	47/119	Right	LH
FT0209207	Kenworth	24.5/62	150/568	80/203	69/175	54/137	54/137	47/119	Left	RH
FT0209206	Kenworth	24.5/62	150/568	80/203	11/28	26/67	26/67	33/84	Right	RH
FT0209207	Kenworth	24.5/62	150/568	80/203	11/28	26/67	26/67	33/84	Left	LH
FT0301405	Mack	25/64	50/189	26/67	13/33	11/28	13/33	13/33	Center	RH
FT0301405	Mack	25/64	50/189	26/67	13/33	11/28	13/33	13/33	Center	LH
FT0301406	Mack	25/64	50/189	26/67	13/32	13/32	13/32	13/32	Right	RH
FT0301407	Mack	25/64	50/189	26/67	13/32	13/32	13/32	13/32	Left	LH
FT0301406	Mack	25/64	50/189	26/67	14/34	14/34	14/34	14/34	Right	LH
FT0301407	Mack	25/64	50/189	26/67	14/34	14/34	14/34	14/34	Left	RH
FT0302405	Mack	25/64	75/284	39/99	19/49	19/49	19/49	19/49	Center	RH
FT0302405	Mack	25/64	75/284	39/99	19/49	19/49	19/49	19/49	Center	LH
FT0302406	Mack	25/64	75/284	39/99	25/64	25/64	25/64	25/64	Left	RH
FT0302407	Mack	25/64	75/284	39/99	25/64	25/64	25/64	25/64	Right	LH
FT0302406	Mack	25/64	75/284	39/99	14/34	14/34	14/34	14/34	Left	LH
FT0302407	Mack	25/64	75/284	39/99	14/34	14/34	14/34	14/34	Right	RH
FT0304405	Mack	25/64	110/416	57/144	28/72	28/72	28/72	28/72	Center	RH
FT0304405	Mack	25/64	110/416	57/144	28/72	28/72	28/72	28/72	Center	LH
FT0304406	Mack	25/64	110/416	57/144	43/109	43/109	43/109	43/109	Left	RH
FT0304407	Mack	25/64	110/416	57/144	43/109	43/109	43/109	43/109	Right	LH
FT0304406	Mack	25/64	110/416	57/144	14/34	14/34	14/34	14/34	Left	LH
FT0304407	Mack	25/64	110/416	57/144	14/34	14/34	14/34	14/34	Right	RH
FT0103305	Peterbilt	23/58	100/379	61/154	30/77	30/77	30/77	30/77	Center	RH
FT0103305	Peterbilt	23/58	100/379	61/154	30/77	30/77	30/77	30/77	Center	LH
FT0103306	Peterbilt	23/58	100/379	61/154	53/134	30/77	30/77	30/77	Right	LH
FT0103307	Peterbilt	23/58	100/379	61/154	53/134	30/77	30/77	30/77	Left	RH
FT0103306	Peterbilt	23/58	100/379	61/154	8/20	30/77	30/77	30/77	Right	RH





## Quality Aftermarket Parts

Suggested prices subject to change without notice. Images for illustration purposes only.

## TRP FUEL TANKS

TRP	Model	Dia. (D) in/cm	Capacity Gal/Liters	Overall Length (C) in/cm	Fill Neck (A) in/cm	Draw Return Cluster in/cm	Sending Unit (B) in/cm	Vent in/cm	Filler Neck Location	Tank Loc
FT0103307	Peterbilt	23/58	100/379	61/154	8/20	30/77	30/77	30/77	Left	LH
FT0404305	Peterbilt	26/66	110/416	53/136	27/68	27/68	27/68	27/68	Center	RH
FT0404305	Peterbilt	26/66	110/416	53/136	27/68	27/68	27/68	27/68	Center	LH
FT0404306	Peterbilt	26/66	110/416	53/136	46/116	27/68	27/68	27/68	Left	RH
FT0404307	Peterbilt	26/66	110/416	53/136	46/116	27/68	27/68	27/68	Right	LH
FT0404306	Peterbilt	26/66	110/416	53/136	8/20	27/68	27/68	27/68	Left	LH
FT0404307	Peterbilt	26/66	110/416	53/136	8/20	27/68	27/68	27/68	Right	RH
FT0407305	Peterbilt	26/66	135/511	64/163	32/82	32/82	32/82	32/82	Center	RH
FT0407305	Peterbilt	26/66	135/511	64/163	32/82	32/82	32/82	32/82	Center	LH
FT0407306	Peterbilt	26/66	135/511	64/163	56/143	32/82	32/82	32/82	Left	RH
FT0407307	Peterbilt	26/66	135/511	64/163	56/143	32/82	32/82	32/82	Right	LH
FT0407306	Peterbilt	26/66	135/511	64/163	8/20	32/82	32/82	32/82	Left	LH
FT0407307	Peterbilt	26/66	135/511	64/163	8/20	32/82	32/82	32/82	Right	RH
FT0409305	Peterbilt	26/66	150/568	71/181	36/90	36/90	36/90	36/90	Center	RH
FT0409305	Peterbilt	26/66	150/568	71/181	36/90	36/90	36/90	36/90	Center	LH
FT0409306	Peterbilt	26/66	150/568	71/181	63/161	36/90	36/90	36/90	Left	RH
FT0409307	Peterbilt	26/66	150/568	71/181	63/161	36/90	36/90	36/90	Right	LH
FT0409306	Peterbilt	26/66	150/568	71/181	8/20	36/90	36/90	36/90	Left	LH
FT0409307	Peterbilt	26/66	150/568	71/181	8/20	36/90	36/90	36/90	Right	RH
FT0103601	Sterling	23/58	100/379	61/154	30/77	30/77	27/70	32/82	Center	LH
FT0103602	Sterling	23/58	100/379	61/154	30/77	30/77	27/70	32/82	Center	RH
FT0103603	Sterling	23/58	100/379	61/154	22/56	22/56	19/49	24/61	Right	RH
FT0103604	Sterling	23/58	100/379	61/154	22/56	22/56	19/49	24/61	Left	LH
FT0407705	Volvo	26/66	135/511	64/163	32/82	30/76	32/82	32/82	Center	RH
FT0407705	Volvo	26/66	135/511	64/163	32/82	30/76	32/82	32/82	Center	LH
FT0407706	Volvo	26/66	135/511	64/163	54/138	54/138	54/138	54/138	Left	RH
FT0407707	Volvo	26/66	135/511	64/163	54/138	54/138	54/138	54/138	Right	LH
FT0407706	Volvo	26/66	135/511	64/163	10/25	10/25	10/25	10/25	Left	LH
FT0407707	Volvo	26/66	135/511	64/163	10/25	10/25	10/25	10/25	Right	RH
FT0409705	Volvo	26/66	150/568	71/181	36/90	33/85	36/90	36/90	Center	RH
FT0409705	Volvo	26/66	150/568	71/181	36/90	33/85	36/90	36/90	Center	LH
FT0409706	Volvo	26/66	150/568	71/181	61/156	61/156	61/156	61/156	Left	RH
FT0409707	Volvo	26/66	150/568	71/181	61/156	61/156	61/156	61/156	Right	LH
FT0409706	Volvo	26/66	150/568	71/181	10/25	10/25	10/25	10/25	Left	LH
FT0409707	Volvo	26/66	150/568	71/181	10/25	10/25	10/25	10/25	Right	RH
FT0105801	Western Star	23/58	120/454	73/185	36/92	36/92	33/85	38/98	Center	LH
FT0105802	Western Star	23/58	120/454	73/185	36/92	36/92	33/85	38/98	Center	RH
FT0105803	Western Star	23/58	120/454	73/185	52/132	52/132	49/124	54/137	Left	RH
FT0105804	Western Star	23/58	120/454	73/185	52/132	52/132	49/124	54/137	Right	LH



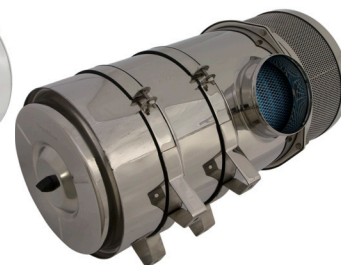
G112504



A130115



A150163



A150164

## AIR CLEANERS

Part#	Description	Inlet	Outlet
G112504	ECG 11", Kenworth T600, T800 & Peterbilt 367 Under Hood	7"	7"
G110342	ECG 11", Peterbilt 335 Under Hood	9.75" bellows inlet	5"
G110171	EPG 11" with Round Inlet Peterbilt 378 Under Hood	9.75" bellows inlet	6"
A130085	Cleaner-Air 13" EBA	7"	7"
A130108	Cleaner-Air Assembly Painted	7"	7"
A130115	Cleaner-Air 13" ERA	6"	6"
A150137	ERA 15", Peterbilt 367, 388, 389 Cowl Mount Assembly	7"	7"
A150138	Cleaner-Air 15" ERA	7"	7"

### Consistent OEM Quality:

Increase the performance and life of your engine by delivering clean air when it needs it most.

\*See dealer for additional applications not listed and product specifications.



ACHSS13



ACHSS13K



ACHSS15



ACHSS15K

## TRP AIR CLEANERS

TRP	Description
ACHBRA15	Bracket-Air Cleaner Peterbilt 15"
ACHSS13	Cleaner-Air Stainless Steel 13"
ACHSS13K	Cleaner-Air Stainless Steel 13" Kit
ACHSS15	Cleaner-Air Stainless Steel 15"
ACHSS15K	Cleaner-Air Stainless Steel 15" Kit
ACHSTR15PB	Strap-Air Cleaner Peterbilt 15"



GR1NTLT17B



GR1NTLT17C



GRFLBCM2CR



GRFL6070PA



GRFLBCM2PA



GRFLBCM2PAGR



GRFLC0L0211



GRFLCAS08



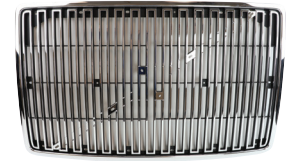
GRFLCENCRB



GRKW900L



GRMKV1SP1N



GRV0LVNL

**TRP GRILLES**

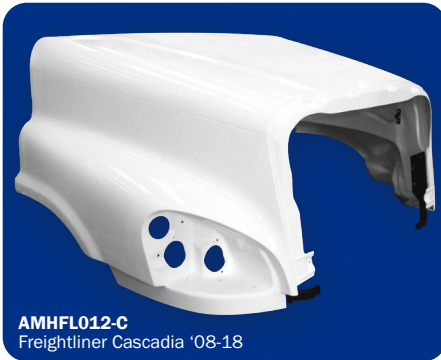
Part Number	Description
GRKW900L	Grille-Kenworth W900L Stainless Chrome
GRKWT800	Grille Set - Kenworth T800 Stainless Steel
GRFL6070PA	Grille-FL 60/70 with Bug Screen
GRFLBCM2CR	Surround-FL BCLS M2 112 Chrome with Bug Screen
GRFLC0L0211	Grille-FL Columbia Chrome with Black
GRFLCAS08	Grille-FL Cascadia with Bug Screen
GRFLCENCRB	Grille-FL Century Chrome/Black with Bug Screen
GRFLBCM2CRGR	Grille-FL BUSI CLS M2 112 Chrome with Bug Screen
GRFLBCM2PAGR	Grille-FL BUSI CLS M2 112 Paint with Bug Screen
GRFLBCM2PA	Grille-FL BCLS M2 112 Paint with Bug Screen
GR1NTLT17B	Grille-Intl LT Black with Bug Screen
GR1NTLT17C	Grille-Intl LT Chrome with Bug Screen
GR1NTPR008	Grille-Intl Prostar Chrome with Bug Screen
GRV0LVNL	Grille-Volvo VNL Chrome with Bug Screen
GRV0LVNL04	Grille-Volvo VNL 04-18 Chrome with Bug Screen
GRMKV1SP1N	Grille-Mack Vision/Pinnacle with Bug Screen



**Quality Aftermarket Parts**

Suggested prices subject to change without notice. Images for illustration purposes only.

**TRP  
HOODS**



**AMHFL012-C**  
Freightliner Cascadia '08-18



**AMHNV018-C**  
International Prostar '08+



**AMHVL002-C**  
Volvo VNL '04+



**AMHPB005-C**  
Peterbilt Model 387 '99+



**AMHKW009-C**  
Kenworth W900L '02+



**AMHMK008-C**  
MACK Granite CV '02+ with Hinge Bar

**TRP HOODS**

TRP	Description
AMHFD001-C	Ford F Series 94-99
AMHFD002-C	Ford F Series 00-03
AMHFD003-C	Ford F Series 650 750 04-09
AMHFD004-C	Ford F Series 650 750 04-10 with Hinge Bar
AMHFD005-C	Ford F Series 650 750 10&Up
AMHFD006-C	Ford F Series 650 750 10&Up with Hinge Bar
AMHFL001-C	Freightliner M2 106 05&Up with Bezel Holes
AMHFL002-C	Freightliner M2 106 05&Up
AMHFL003-C	Freightliner CL120 Columbia 01-09
AMHFL004-C	Freightliner CL120 Columbia 01-09 with Hinge Bar
AMHFL005-C	Freightliner CST120 Century 96-04
AMHFL006-C	Freightliner CST120 Century 96-04 with Wide Hinge Bar

TRP	Description
AMHFL007-C	Freightliner CST120 Century 96-04 with Narrow Hinge
AMHFL008-C	Freightliner FL70 FL80 91-04
AMHFL009-C	Freightliner FLD120 89&Up with Hinge Bar
AMHFL010-C	Freightliner Classic XL132 98&Up with Hinge Bar
AMHFL011-C	Freightliner CST120 Century 05&Up with Hinge Bar
AMHFL012-C	Freightliner Cascadia CA125 Long 08-18
AMHFL013-C	Freightliner Cascadia CA125 Long 08-18 with Hinge Bar
AMHFL014-C	Freightliner M2 112 03&Up
AMHGM001-C	GMC C Series Topkick 95-02
AMHGM002-C	GMC Kodiak Topkick 90-94
AMHGM003-C	GMC C-6500 7500 8500 03&Up
AMHHN001-C	HINO 258 268 338 06-10
AMHHN002-C	HINO 238 258 268 338 11&Up
AMHKW002-C	Kenworth T300 Curved Windshield 94-09
AMHKW003-C	Kenworth T600 II Curved Windshield 90-94
AMHKW004-C	Kenworth T600B Aero Curved Windshield 95-97
AMHKW005-C	Kenworth T800A Flat Windshield 87-04
AMHKW006-C	Kenworth T800B Curved Windshield 95-07
AMHKW007-C	Kenworth T800B Short Curved Windshield 95-07
AMHKW008-C	Kenworth T660 08&Up
AMHKW009-C	Kenworth W900L 02&Up
AMHKW011-C	Kenworth T600B Aero 97&Up
AMHKW012-C	Kenworth T600B Aero 97&Up with Hinge Bar
AMHKW014-C	Kenworth W900L 94&Up
AMHKW015-C	Kenworth T800B 08&Up
AMHKW016-C	Kenworth T800B Short 08&Up



TRP	Description
AMHKW017-C	Kenworth T800B with Breather and Split Fender Cut, 08&Up
AMHMK001-C	Mack RD 91&Up with Hinge Bar
AMHMK002-C	Mack CH600 SBA 07&Up with Hinge Bar
AMHMK003-C	Mack Granite SFA 07&Up with Hinge Bar
AMHMK004-C	Mack Granite SBA 07&Up with Hinge Bar
AMHMK005-C	Mack CH600 SFA 88-04 with Hinge Bar
AMHMK006-C	Mack CHN SFA 05&Up with Hinge Bar
AMHMK007-C	Mack CHU613 SFA 07&Up with Hinge Bar
AMHMK008-C	Mack Granite CV 02&Up with Hinge Bar
AMHNV001-C	International 8200 8300 89-01
AMHNV002-C	International 9400 89-94 with Air Duct and Hinge Bar
AMHNV003-C	International 9400 95-96 with Hinge Bar
AMHNV004-C	International 4700 4900 89-01
AMHNV005-C	International 4200 4300 4400 02-09
AMHNV006-C	International 4200 4300 4400 02-09 with Hinge Bar
AMHNV007-C	International 4200 4300 4400 10&Up
AMHNV008-C	International 4200 4300 4400 10&Up with Hinge Bar
AMHNV009-C	International 7100 8100 89-01
AMHNV010-C	International 9200 Windshield 97-99
AMHNV011-C	International 9200 Windshield 97-99 with Hinge Bar
AMHNV012-C	International 9200I Curved Windshield 00&Up
AMHNV013-C	International 9200I Curved Windshield 00&Up with Hinge Bar
AMHNV014-C	International 9400 Windshield 97-99
AMHNV015-C	International 9400 Windshield 97-99 with Hinge Bar
AMHNV016-C	International 9400I Curved Windshield 00&Up
AMHNV017-C	International 9400I Curved Windshield 00&Up with Hinge Bar

TRP	Description
AMHNV018-C	International Prostar Long 56" 08&Up
AMHNV019-C	International Prostar Long 56" 08&Up with Hinge Bar
AMHNV020-C	International 4400 Durastar 02-09
AMHNV021-C	International 4400 Durastar 02-09 with Hinge Bar
AMHNV022-C	International 4400 Durastar 10&Up
AMHNV023-C	International 4400 Durastar 10&Up with Hinge Bar
AMHNV024-C	Navistar 8500 8600 02&Up
AMHNV025-C	Navistar 7300 7400 7500 03-07
AMHNV026-C	Navistar 7300 7400 7500 03-07 with Hinge Bar
AMHNV027-C	Navistar 7600 7700 03-07
AMHNV028-C	Navistar 7600 7700 03-07 with Hinge Bar
AMHNV029-C	Navistar 9900I 124" BBC 99&Up
AMHNV030-C	Navistar 9900I 124" BBC 99&Up with Breather Cuts
AMHNV031-C	Navistar 9900I Short 5900I 99&Up
AMHNV032-C	Navistar 9900I Short 5900I 99&Up with Breather Cut
AMHNV033-C	International Workstar 7400 7500 SBA 07&Up
AMHNV034-C	International Workstar 7600 7700 SBA 07&Up
AMHNV035-C	International Workstar 7600 7700 SBA 07&Up with Hinge Bar
AMHPB001-C	Peterbilt 379 Fiberglass 88-06 with Stainless Grille
AMHPB002-C	Peterbilt 379 Fiberglass 88-06 with Grille and Wide Fender
AMHPB003-C	Peterbilt 357 378 SFA 97&Up without Grille Assembly
AMHPB004-C	Peterbilt 357 378 SFA 97&Up with Grille Assembly
AMHPB005-C	Peterbilt 387 Aero SBA Long 99&Up
AMHPB007-C	Peterbilt 379 Aluminum Hood 88-06 with Aluminum Fenders and Stainless Grille
AMHVL001-C	Volvo VNL 98-02
AMHVL002-C	Volvo VNL 04&Up





## TRP HANDLES

TRP	Description	Make	Model/Year
DRH011000L	Handle-Door Outside LH Chrome	Kenworth	T660 T600 1995-2006 / K100, W900 1981-2006
DRH011000R	Handle-Door Outside RH Chrome	Kenworth	T660 T600 1995-2006 / K100, W900 1981-2006
DRH011001L	Handle-Door Inside LH Chrome	Kenworth	T400, T450, T600, T600A, T800, W900 1982-2005
DRH011001R	Handle-Door Inside RH Chrome	Kenworth	T400, T450, T600, T600A, T800, W900 1982-2005
DRH011002L	Handle-Door Tool Outside LH Chrome	Kenworth	T600 T800 W900 Sleeper And Compartments 2004-2015



TRP	Description	Make	Model/Year
DRH011002R	Handle-Door Tool Outside RH Chrome	Kenworth	T600 T800 W900 Sleeper And Compartments 2004-2015
DRH011003L	Handle-Door Outside LH Chrome	Kenworth	T-Series 1995-2001
DRH011003R	Handle-Door Outside RH Chrome	Kenworth	T-Series 1995-2001
DRH011004L	Handle-Door Inside LH Black	Kenworth	T-Series And W-Series 1995-2001
DRH011004R	Handle-Door Inside RH Black	Kenworth	T-Series And W-Series 1995-2001
DRH021000L	Handle-Door Outside LH Chrome	Peterbilt	Fits 349,353,359 (1100 Model Cab), Fits 378-379 Up To 2005 (1983-2005)
DRH021000R	Handle-Door Outside RH Chrome	Peterbilt	Fits 349,353,359 (1100 Model Cab), Fits 378-379 Up To 2005 (1983-2005)
DRH021001L	Handle-Door Inside LH Black	Peterbilt	349,353, 359, 377,378,379 1983-2005
DRH021001R	Handle-Door Inside RH Black	Peterbilt	349,353, 359, 377,378,379 1983-2005
DRH021002L	Handle-Door Bag Outside LH Chrome	Peterbilt	Sleeper And Accessory 1987-2005
DRH021002R	Handle-Door Bag Outside RH Chrome	Peterbilt	Sleeper And Accessory 1987-2005
DRH031000L	Handle-Door Outside LH Black HSG Chrome Lever	Kenworth/ Peterbilt	T270,T300,T370,T660,325.330,357,386,389 with Daylight Door 2001-2016
DRH031000R	Handle-Door Outside RH Black HSG Chrome Lever	Kenworth/ Peterbilt	T270,T300,T370,T660,325.330,357,386,389 with Daylight Door 2001-2016
WNH031000	Handle-Window Black	Kenworth/ Peterbilt	T300, T800, W900, T2000, T700 1993-2015 and 387, 587 1999-2011
DRH041000L	Handle-Door Outside Chrome LH	Freightliner	Classic Cab, FLD112 1997-2013
DRH041000R	Handle-Door Outside Chrome RH	Freightliner	Classic Cab, FLD112 1997-2013
DRH041001L	Handle-Door Outside Chrome LH	Freightliner	Columbia, Cascadia 2000-2011
DRH041001R	Handle-Door Outside Chrome RH	Freightliner	Columbia, Cascadia 2000-2011
DRH041002L	Handle-Door Outside Chrome LH	Freightliner	Columbia, Condor 1996-2011
DRH041002R	Handle-Door Outside Chrome RH	Freightliner	Columbia, Condor 1996-2011
DRH041003L	Handle-Door Outside without 30cm Rod Black LH	Freightliner	Condor and Columbia
DRH041003R	Handle-Door Outside without 30cm Rod Black RH	Freightliner	Condor and Columbia



TRP	Description	Make	Model/Year
DRH041004L	Handle-Door Outside Black LH	Freightliner	Cascadia, Business M2 08-16
DRH041004R	Handle-Door Outside Black RH	Freightliner	Cascadia, Business M2 08-16
WNH041000	Handle-Window Black	Freightliner	M2 2002-2015
WNH041001	Handle-Window Black	Freightliner	Acterra 5500, 6500, 7500, 8500 1990-2009, 2009-90
WNH041002	Handle-Window Black	Freightliner	FLD Classic 2003-2009, 1991-1996
DRH051000L	Handle-Door Inside (#10-24) LH Zinc Black	International	Truck 1984-2005
DRH051000R	Handle-Door Inside (#10-24) RH Zinc Black	International	Truck 1984-2005
DRH051001L	Handle-Door Inside (#10-24) LH Zinc Chrome	International	Truck 1984-2005
DRH051001R	Handle-Door Inside (#10-24) RH Zinc Chrome	International	Truck 1984-2005
DRH051002L	Handle-Door Inside LH Black	International	4300 08-C, Prostar 08-C , Durastar 10-C, 73/74/75/76/7700, 85/8600, CXT, MXT, RXT
DRH051002R	Handle-Door Inside RH Black	International	4300 08-C, Prostar 08-C , Durastar 10-C, 73/74/75/76/7700, 85/8600, CXT, MXT, RXT
DRH051003	Handle-Door Outside Long Leg Zinc Chrome	International	1997-2008 (2000, 3000, 4000, 7000,8000,9000 Series)
DRH051004	Handle-Door Outside Short Leg Zinc Chrome	International	Truck 84-05, Dina 80, Famsa (Fits International 4700, 4900, 7100, 8100, 8200 And 8300 Series.)
DRH051005L	Handle-Door Outside Black LH	International	07-14 ProStar, 3200 Comm BUS; 41/42/43/4400; 73/74/75/76/7700; 85/8600; CXT/MXT/RXT
DRH051005R	Handle-Door Outside Black RH	International	07-14 ProStar, 3200 Comm BUS; 41/42/43/4400; 73/74/75/76/7700; 85/8600; CXT/MXT/RXT
DRH051006L	Handle-Door Outside Black with Chrome LH	International	2014-07 ProStar
DRH051006R	Handle-Door Outside Black with Chrome RH	International	4300 14-C ProStar
DRH051007L	Handle-Door Outside Black with Chrome LH	International	07-14 ProStar, 3200 Comm BUS; 41/42/43/4400; 73/74/75/76/7700; 85/8600; CXT/MXT/RXT
DRH051007R	Handle-Door Outside Black with Chrome RH	International	07-14 ProStar, 3200 Comm BUS; 41/42/43/4400; 73/74/75/76/7700; 85/8600; CXT/MXT/RXT



TRP	Description	Make	Model/Year
DRH061000L	Handle-Door Outside Black LH	Volvo	FM2012/FH2012 (US For VN and VNL and VT Models)
DRH061000R	Handle-Door Outside Black RH	Volvo	FM2012/FH2012 (US For VN and VNL and VT Models)
DRH061001L	Handle-Door Outside Black with Chrome LH	Volvo	FM2012/FH2012 (US For VN and VNL and VT Models)
DRH061001R	Handle-Door Outside Black with Chrome RH	Volvo	FM2012/FH2012 (US For VN and VNL and VT Models)
DRH061002L	Handle-Door Inside Base LH	Volvo	FM2012/FH2012 (US For VN and VNL and VT Models)
DRH061002R	Handle-Door Inside Base LH	Volvo	FM2012/FH2012 (US For VN and VNL and VT Models)
DRH061002	Handle-Door Inside Base RH	Volvo	FM2012/FH2012 (US for VN and VNL and VT Models)



## TRP EXHAUST STACKS

TRP	Description
EP50S260C	Exhaust Stack, Straight (5"X60"), Chrome OP
EP50CS254C	Exhaust Stack, Curved (5"X54"), Chrome OD
EP50CS218C	Exhaust Stack, Curved (5"X18"), Chrome OD

### Consistent OEM Quality:

TRP Exhaust stacks meet or exceed OEM specifications. They are precision engineered to provide a tight seal and precise fit.

See your dealer for additional applications not listed above.



QT00101



QT00213



QT00071

## TRP FENDERS

TRP	Description
QT00101	Fender-Quarter Full Brace
QT00071	Fender-Quarter Braceless LH/RH
QT00081	Fender-Quarter Braceless
QT00091	Fender-Quarter Braceless
QT00101	Fender-Quarter Full Brace
QT00111	Fender-Quarter Full Brace
QT00121	Fender-Quarter Full Brace
QT00131	Fender-Quarter Half Brace
QT00171	Fender-Quarter Low Mount
QT00213	Fender-Quarter XTRMWTTHR K
QT00251	SS 31" Quarter Fender No Mount



TRPK201

## TRP GRILLE GUARDS

TRP	Description	Application
TRPF201	Cascadia Grille Guard '04-'17 T	Cascadia '04-'17 T
TRPF201B	Cascadia Grille Guard	Cascadia '04-'17 T
TRPF202	Cascadia Grille Guard '18 UP	Cascadia '18 Up
TRPF202B	Cascadia Grille Guard	Cascadia '18 Up
TRPK201	Kenworth T680 Grille Guard '11 Up	Kenworth T680 '11 Up
TRPK201B	Black Powder-Coated T680 Grille Guard	Kenworth T680 '11 Up
TRPK202	Kenworth W990 Grille Guard	Kenworth '21
TRPK202B	Kenworth W990 Grille Guard Black	Kenworth '21
TRPK203	Grille Guard Kenworth T680 Next Gen 21-Up SS	T680 Next Gen 21-Up SS
TRPK203B	Grille Guard Kenworth T680 Next Gen 21-Up Black	T680 Next Gen 21-Up Black
TRPN201	ProStar LT Grille Guard '08 Up	ProStar '08 Up
TRPN201B	ProStar LT Grille Guard '08 Up Black	ProStar '08 Up
TRPP201	Peterbilt 579 Grille Guard '12 Up	Peterbilt 579 '12 Up
TRPP201B	Black Powder-Coated 579 Grille Guard	Peterbilt 579 '12 Up
TRPP202	Peterbilt 379/567 Grille Guard SS	Peterbilt 379/567
TRPP202B	Peterbilt 379/567 Grille Guard Black	Peterbilt 379/567
TRPP203	Grille Guard Peterbilt 579 Next Gen 21-Up SS	Peterbilt 579 '21 Up
TRPP203B	Grille Guard Peterbilt 579 Next Gen 21-Up Black	Peterbilt 579 '21 Up
TRPP204	Grille Guard Peterbilt 389 '08 Up SS	Peterbilt 389 '08 Up
TRPP204B	Grille Guard Peterbilt 389 '08 Up Black	Peterbilt 389 '08 Up
TRPV201	VNL/VNR Grille Guard '03-'16	VNL/VNR Grille Guard '03-'16
TRPV202	VNL/VNR Grille Guard '18 Up	VNL/VNR Grille Guard '18 Up
TRPW202	5700 CAS Grille Guard '16 Up	Cascadia '16 Up



HS1309



HS1369



HS6010

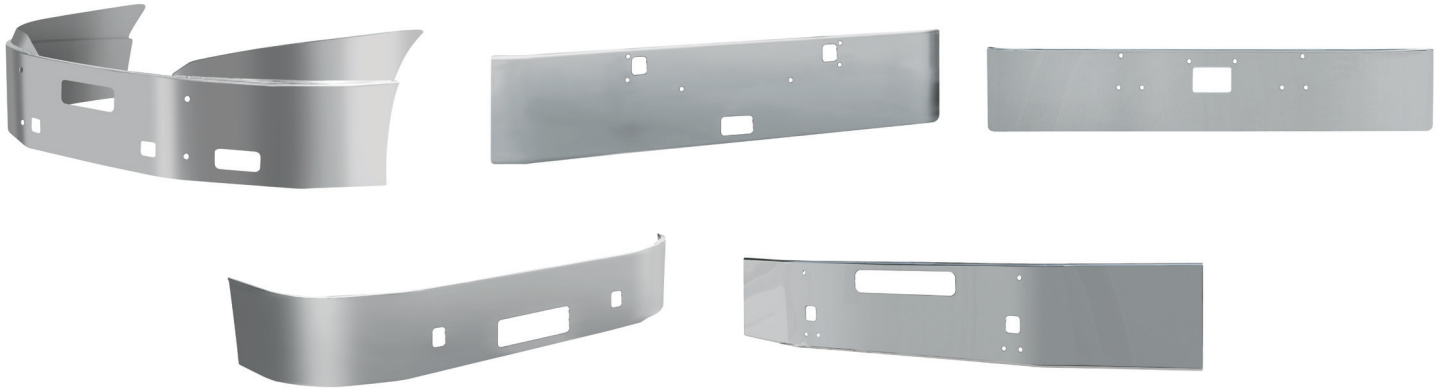
## TRP HOOD SPRINGS

TRP	Description
HS1309	Spring - Hood Red Peterbilt 389/379
HS1368	Spring - Hood Green Peterbilt 386/388/389/384
HS1369	Spring - Hood Tilt Black 379/378/377/386/385
HS1379	Spring - Hood Gray Peterbilt
HS2496	Spring - Hood Black 359
HS6010	Spring - Hood White 365/367
HS3046	Spring - Hood Blue- Peterbilt 379/378/377/357
HS7100	Spring - Hood Red - Kenworth T800/T600/W900
HS7102	Spring - Hood White - Kenworth W900/T2000/T600
HS7104	Spring - Hood Brown Kenworth W900/T800/C500/C550
HS7106	Spring - Hood Blue Kenworth T800/W900/C500/T600
HS7107	Spring - Hood Black - Kenworth W900B
HS7150	Spring - Hood Yellow Kenworth T800/T400/T450/W900
HS3531	Spring - Hood International 4000
HS3532	Spring - Hood International 9000
HS3533	Spring - Hood International 9200 and 9400
HS72691	Spring - Hood Freightliner FLD and Classic





## ALL-MAKES METAL BUMPERS



### TRP ALL-MAKES METAL BUMPERS

The TRP all-makes bumper line is expanded and better than ever, now offering bumpers for approximately 170 truck models, including standard replacement bumpers and some custom options. Made in the USA with all metal, one-piece construction, they are designed and tested to strict SC4/5 corrosion protection standards - the highest levels.

#### FEATURES & BENEFITS

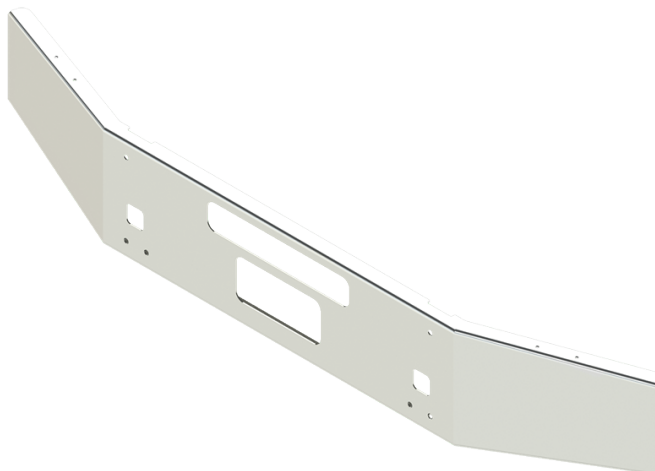
- » 350+ part numbers
- » Material choices are chrome steel, 304 stainless steel or black powder coated steel
- » Chrome steel bumpers include black backside paint for a great look and additional corrosion resistance

#### RELATED PARTS

- » VU190080WNG universal bolt kit, 4 pcs.
- » VU190082WNG universal bolt kit, 8 pcs.
- » VP190083WNG bolt kit for common chassis PB 388, 389, 365 and KW W900, W990

### TRP TOP SELLERS!

TRP	Description
TX0452011-18TF	Bumper International PROSTAR Fixed Mount, Fog, Chrome
TX05X0011-25NS	Bumper KW T800B, T880, 04 - New, 14", VNT, Tow
TX08C0020-06TS	Bumper PB 378,379 Conventional, 18" Texas Square, Tow, 10GA
TX08U0215-28NS	Bumper PB 384 2008 - Newer 13" SBA, Step, Tow
TX7510210-06TS	Bumper W900B, L, 1982 - 2010, 18" Texas Square, Step, Tow



## TRP METAL BUMPERS

TRP	Description
TX0452011-18TF	Bumper International Prostar Fixed Mount, Fog, Chrome
TX08C0020-51NS	Bumper Peterbilt 378, 379 Conv, 20" Box, Tow
TX08V0010-02NS	Bumper Peterbilt 389, 16" TPR, 10GA, Tow, No Shields
TX08V0013-02NS	Bumper Peterbilt 388 389, Tow, Bellypan, 16 Inch TPR
TX05X0011-25NS	Bumper-T800 Conv Set Back 14" Open End
TX08C0020-06TS	Bumper-Peterbilt 378 and 379 Conv 18" Squared, Roll End
TX08U0215-28NS	Bumper Peterbilt 386 2006-Newer 13" SBA, Step, Tow
TX7510210-06TS	Bumper-Kenworth W900L 18" Squared, Roll End
TX0510210-02TS	Bumper-Kenworth W900B
TX0510210-06PL	Bumper W900B, L, 1982-2010, 18" TX Squared, Pallet
TX0510210-06TS	Bumper-Kenworth W900L 18" Squared, Roll End
TX08C0020-02TS	Bumper-Peterbilt 378 and 379 Conv 16" TPR Roll End
TX08C0020-06NP	Bumper Peterbilt 378, 379 Conv, 18" TX, Tow, Pallet
TX08C0020-06TS	Bumper-Peterbilt 378 and 379 Conv 18" Squared, Roll End
TX08C0020-11TS	Bumper-Peterbilt 378 and 379 Conv 18" Squared, Box End
TX75G0011-26NS	Bumper-Kenworth T800 Conv 14" TPR Brk/Open End



**Quality Aftermarket Parts**

Suggested prices subject to change without notice. Images for illustration purposes only.

**TRP  
AERO MIRRORS**



MRFL01L



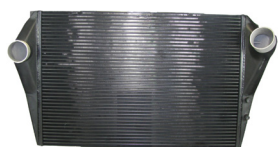
MRFL02L



MRKP01R

**TRP MIRRORS**

TRP	Make	Model	Description
MRFL01L	Freightliner	Cascadia, 2008-2018	Mirror with Defrost, Black, LH
MRFL01R	Freightliner	Cascadia, 2008-2018	Mirror with Defrost, Black, RH
MRFL01R-C	Freightliner	Cascadia, 2008-2018	Mirror with Defrost, Chrome, RH
MRFL02L	Freightliner	Cascadia, 2008-2018	Hood Mirror without Defrost, Black, LH
MRFL02L-C	Freightliner	Cascadia, 2008-2018	Hood Mirror without Defrost, Chrome, LH
MRFL02R	Freightliner	Cascadia, 2008-2018	Hood Mirror without Defrost, Black, RH
MRFL02R-C	Freightliner	Cascadia, 2008-2018	Hood Mirror without Defrost, Chrome, RH
MRKP01L	Kenworth/ Peterbilt	387 (1999-2011), 587 (2010-2017), T2000 (1999-2010), T700 (2010-2014)	Mirror with Defrost, and Temp Sensor, Black, LH
MRKP01R	Kenworth/ Peterbilt	387 (2007-2011), 587 (2010-2017), T2000 (2007-2010), T700 (2010-2014)	Mirror with Defrost, Black, RH
MRKW01L	Kenworth	T170, T270 & T370 (2017-Present), T440 & T470 (2011-Present), T600 & T660 (2010-Present), T800 (2011-Present), W900 (2011-Present)	Mirror with Defrost and Temp Sensor, Black, LH
MRKW01L-C	Kenworth	T170, T270 & T370 (2017-Present), T440 & T470 (2011-Present), T600 & T660 (2010-Present), T800 (2011-present), W900 (2011-Present)	Mirror with Defrost and Temp Sensor, Chrome, Black
MRKW01R	Kenworth	T170, T270 & T370 (2017-Present), T440 & T470 (2011-Present), T600 & T660 (2010-Present), T800 (2011-present), W900 (2011-Present)	Mirror with Defrost, Black, RH
MRKW01R-C	Kenworth	T170, T270 & T370 (2017-Present), T440 & T470 (2011-Present), T600 & T660 (2010-Present), T800 (2011-present), W900 (2011-Present)	Mirror with Defrost, Chrome, RH



CAC61-1001TRP



CAC61-1005TRP



CAC61-1006TRP



CAC61-1042TRP



CAC61-1008TRP



CAC61-1015TRP



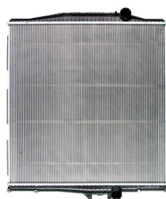
CAC61-1557TRP



RAD42-10171TRP



CAC61-1553TRP



RAD42-10205TRP

**TRP COOLING**

Part Number	Description
RAD42-10002TRP	Radiator, International 2500, 2600, 8300, 9200
RAD42-10114TRP	Radiator, International 4900 Series MT
CAC61-1008TRP	Charge Air Cooler, International 8000 and 9000 Series
RAD42-10325TRP	Radiator, Kenworth T600/T800 Series
CAC61-1557TRP	Charge Air Cooler, Kenworth T600, T800, W900
CAC61-1015TRP	Charge Air Cooler, Kenworth T600, T800, W900
RAD42-10322TRP	Radiator, Peterbilt 357, 375 Series
RAD42-10334TRP	Radiator, Peterbilt 357, 375 Series
CAC61-1553TRP	Charge Air Cooler, Peterbilt 357, 378, 379
CAC61-1024TRP	Charge Air Cooler, Peterbilt 357, 378, 378
RAD42-10003TRP	Radiator, Freightliner Conventional 93 and Up
RAD42-10071TRP	Radiator, Freightliner Century Class Series
CAC61-1005TRP	Charge Air Cooler, Freightliner Fld120
CAC61-1042TRP	Charge Air Cooler, Freightliner Columbia 2007+
CAC61-1006TRP	Charge Air Cooler, Freightliner Columbia
RAD42-10205TRP	Radiator, Volvo VNL 4200 Series
RAD42-10171TRP	Radiator, Mack CH Series 92-04
CAC61-1001TRP	Charge Air Cooler, Ford L Series



HLK10000



TRK59040



TRB68250

## TRP RUBBER PARTS

TRP	Description
HLK10000	Hood Latch (K147-107)
HLK10350	Hood Latch Kit (23-13857 / L56-0001)
M174020	Hood Pin (K179-528)
M174120	Radiator Mount (07-03286RUB)
TRK59050	Rebushing Kit (03AL1)
TRK59040	Rebushing Kit (03AL2)
EB10.30X33	Rubber Bushing 10.3IDx33ODx32L 8/PKG (14-14656-4)
TRB68250	Torque Rod Bushing (839310)
SB800010	Torque Rod Bushing Chalmers (800010CS1)
TRB68200	Torque Rod Bushing Hendrickson (44695-000L)



**TRP GLASS**

TRP	Description
DL4586-5	Glass-Navistar
DL4645-5	Glass-Navistar
DW919-5	Glass-Navistar
DW920-5	Glass-Navistar
DL4744-5	Glass-Navistar
DL4761-5	Glass-Navistar
DT4673-5	Glass-Navistar
DW1451-20	Glass-Navistar
DW1451-5	Glass-Navistar
DW1663-20	Glass-Navistar One Piece Encapsulated 06-07
DW1664-20	Glass-Navistar Two Piece Encapsulated RH
DW1664-5	Glass-Navistar Two Piece Encapsulated RH
DW1665-20	Glass-Navistar Two Piece Encapsulated LH
DW1665-5	Glass-Navistar Two Piece Encapsulated LH
DW1685-20	Glass-Navistar Encapsulated 06-10 -Solar



TRP	Description
DW1685-5	Glass-Navistar Encapsulated 06-10 - Solar
DW2550-20	Glass-Navistar Prostar 2019
DW1383-20	Glass-Navistar One Piece Encapsulated
DW1383-5	Glass-Navistar One Piece Encapsulated
DW1384-5	Glass-Navistar Two Piece Encapsulated RH
DW1385-20	Glass-Navistar Two Piece Encapsulated LH
DW1385-5	Glass-Navistar Two Piece Encapsulated LH
DW1765-5	Glass-Navistar Encapsulated 08-10 - Heated
DW1128-5	Glass-Navistar
GB482058-20	Glass-Navistar IC Large
GB482058-5	Glass-Navistar IC Large
GB482059-25	Glass-Navistar IC Conv One Piece
GB482059-5	Glass-Navistar IC Conv One Piece
GB482060-30	Glass-Navistar Amtran RE GB
GB482061-30	Glass-Navistar Amtran RE GT
GB482061-5	Glass-Navistar Amtran RE GT
DL4676-5	Glass-Peterbilt
DW1036-10	Glass-Peterbilt
DW1036-30	Glass-Peterbilt
DW1037-10	Glass-Peterbilt
DW2561-20	Windshield 567/579 Encap with LDWS Bendix
DW2039-20	Glass-Windshield One Piece 579/567
DW2039-5	Glass-Windshield One Piece 579/567
DW1037-30	Glass-Peterbilt
DL4717-10	Glass-Kenworth
DL4717-30	Glass-Kenworth
DL4717-5	Glass-Kenworth
DW1655-30	Glass-Kenworth
DW1655-5	Glass-Kenworth
DW1656-10	Glass-Kenworth
DW1656-30	Glass-Kenworth

TRP	Description
DW1656-5	Glass-Kenworth
DW1657-10	Glass-Kenworth
DW1657-30	Glass-Kenworth
DW1657-5	Glass-Kenworth
DW1707-30	Glass-Kenworth
DW1707-5	Glass-Kenworth
DW2559-10	Glass-T680/T880 One Piece with LDWS Bracket
DW2559-20	Glass-T680/T880 One Piece with LDWS Bracket
DW2559-5	Glass-T680/T880 One Piece with LDWS Bracket
DW2038-20	Glass-Windshield, One Piece T680/T880
DW2038-5	Glass-Windshield, One Piece T680/T880
DW1139-10	Glass-Kenworth, One Piece Curved
DW1139-30	Glass-Kenworth, One Piece Curved
DW1139-5	Glass-Kenworth, One Piece Curved
DW1163-30	Glass-Kenworth, Two Piece Curved
DW1163-5	Glass-Kenworth, Two Piece Curved
DW1164-30	Glass-Kenworth, Two Piece Curved
DW1164-5	Glass-Kenworth, Two Piece Curved
DL4746-20	Glass-Freightliner
DL4746-5	Glass-Freightliner
DW1439-5	Glass-Freightliner
DW1488-20	Glass-Freightliner
DW1488-5	Glass-Freightliner
DW1494-20	Glass-Freightliner
DW1494-5	Glass-Freightliner
DW1731-30	Glass-Freightliner Cascadia
DW1731-5	Glass-Freightliner Cascadia
DW1732-30	Glass-Freightliner Cascadia
DW1732-5	Glass-Freightliner Cascadia
DW2409-20	Glass-Freightliner Cascadia
DW2409-5	Glass-Freightliner Cascadia





TRP	Description
DW2419-20	Glass-Freightliner Cascadia
DW2419-25	Glass-Freightliner Cascadia
DW2419-5	Glass-Freightliner Cascadia
DW2649-15	Glass-FI Cascadia 19 with Bracket
DW2649-5	Glass-FI Cascadia 19 with Bracket
DW1302-30	Glass-Freightliner
DW1302-5	Glass-Freightliner
DW1303-30	Glass-Freightliner
DW1303-5	Glass-Freightliner
DW1000-20	Glass-Freightliner
DW1000-5	Glass-Freightliner
DL2752-20	Glass-Mack
DL2752-5	Glass-Mack
DW662-30	Glass-Mack
DW662-5	Glass-Mack
DW663-30	Glass-Mack
DW663-5	Glass-Mack
DW933-5	Glass-Mack
DW953-5	Glass-Mack
DW954-5	Glass-Mack
DW1080-30	Glass-Mack
DW1080-5	Glass-Mack
DW1081-30	Glass-Mack
DW1081-5	Glass-Mack
DW1315-30	Glass-Mack
DW1315-5	Glass-Mack
DW863-20	Glass-Volvo
DW863-5	Glass-Volvo
DW864-20	Glass-Volvo
DW864-5	Glass-Volvo
DW865-20	Glass-Volvo

TRP	Description
DW865-5	Glass-Volvo
DW866-20	Glass-Volvo
DW866-5	Glass-Volvo
DW1525-20	Glass-Volvo
DW1525-5	Glass-Volvo
DW2433-10	Glass-Volvo VN Series with LDWS Bracket
DW2433-25	Glass-Volvo VN Series with LDWS Bracket
DW1116-5	Glass-Volvo
DW1117-5	Glass-Volvo
DW1308-20	Glass-Volvo
DW1308-5	Glass-Volvo
DW828-5	Glass-Ford
DW911-5	Glass-Ford
DW828-5	Glass-Ford
DW911-5	Glass-Ford
DW997-5	Glass-Ford
DW1099-5	Glass-Ford
DW1254-20	Glass-Ford L Series Conv Cab
DW1254-5	Glass-Ford L Series Conv Cab
DW965-5	Glass-White
DW966-5	Glass-Western Star
DW1440-5	Glass-Western Star Conv Cab 2001 and Up RH
DW1441-5	Glass-Western Star Conv Cab 2001 and Up LH
DW1882-20	Glass-Windshield
DW1882-5	Glass-Windshield
DW1278-5	Glass-Western Star Conv Cab 96-2000 RH
DW1279-5	Glass-Western Star Conv Cab 96-2000 LH
DW1099-5	Glass-Ford
DW1310-10	Glass T2000/387
DW1310-20	Glass-T2000/387
DW1310-5	Glass-T2000/387



TRP	Description
DW1379-30	Glass-Argosy
DW1380-30	Glass-Argosy
DW1001-20	Glass-Isuzu
DW1001-5	Glass-Isuzu
DW1002-20	Glass-Isuzu
DW1002-5	Glass-Isuzu
DW1301-20	Glass-Isuzu
DW1301-5	Glass-Isuzu
DW1231-20	Glass-Isuzu
DW1231-5	Glass-Isuzu
FW02014-20	Glass-Mitsubishi
FW02014-5	Glass-Mitsubishi
FW2013-20	Glass-Mitsubishi
FW2013-5	Glass-Mitsubishi
FW628-20	Glass-Mitsubishi
FW628-5	Glass-Mitsubishi
FW2521-20	Glass-Hino
FW2521-5	Glass-Hino
FW758-20	Glass-Hino
FW758-5	Glass-Hino
FW759-20	Glass-Hino
FW759-5	Glass-Hino
FW813-20	Glass-Nissan
FW813-5	Glass-Nissan
GB482010-25	Glass-Am-Tran GB
GB482010-5	Glass-Am-Tran GB
GB482011-25	Glass-Thomas MVP and Saf-T-Liner GT
GB482011-5	Glass-Thomas MVP and Saf-T-Liner GT
GB482014-25	Glass-Thomas FS 65 GT
GB482014-5	Glass-Thomas FS 65 GT
GB482015-25	Glass-Thomas FS 65 GB

TRP	Description
GB482015-5	Glass-Thomas FS 65 GB
GB482028-25	Glass-Thomas Saf-T-Liner and MVP-EF
GB48204-5	Glass-Wayne
GB482040-30	Glass-Thomas Vista GB
GB482040-5	Glass-Thomas Vista GB
GB482041-30	Glass-Thomas Vista GT
GB482041-5	Glass-Thomas Vista GT
GB482042-25	Glass-Thomas C2 One Piece GB
GB482042-5	Glass-Thomas C2 One Piece GB
GB482044-25	Glass-Thomas Saf-T-Liner Left GB
GB482044-5	Glass-Thomas Saf-T-Liner Left GB
GB482045-25	Glass-Thomas Saf-T-Liner Left GT
GB482045-5	Glass-Thomas Saf-T-Liner Left GT
GB482046-25	Glass-Thomas Saf-T-Liner Right GB
GB482047-25	Glass-Thomas Saf-T-Liner Right GT
GB4820731-25	Glass-Thomas MVP and Saf-T-Liner GB
GB4820731-5	Glass-Thomas MVP and Saf-T-Liner GB
GB482009-25	Glass-Thomas MVP and Saf-T-Liner GT
GB482009-5	Glass-Thomas MVP and Saf-T-Liner GT
GB48201-25	Glass-Thomas Conventional
GB48201-5	Glass-Thomas Conventional
GB48205-5	Glass-Ward
GB48206-25	Glass-Carpenter Special
GB48206-5	Glass-Carpenter Special
GB48203-25	Glass-Carpenter GT
GB48203-5	Glass-Carpenter GT
GB48295GBN-25	Glass-Bluebird All American RH T3 Shaded
GB48295GBN-5	Glass-Bluebird All American RH T3 Shaded
GB48295GTN-25	Glass-Bluebird All American RH T3 Tinted
GB48295GTN-5	Glass-Bluebird All American RH T3 Tinted
GB48298GBN-25	Glass-Bluebird All American LH T3 Shaded



TRP	Description
GB48298GBN-5	Glass-Bluebird All American LH T3 Shaded
GB48298GTN-25	Glass-Bluebird All American LH T3 Tinted
GB48298GTN-5	Glass-Bluebird All American LH T3 Tinted
GB482050-25	Glass-Bluebird Conventional Left
GB482050-5	Glass-Bluebird Conventional Left
GB482051-25	Glass-Bluebird Conventional Right
GB482051-5	Glass-Bluebird Conventional Right
GB482052-30	Glass-Bluebird TC/2000 GB
GB482053-30	Glass-Bluebird TC/2000 GT
GB482053-5	Glass-Bluebird TC/2000 GT
GB482054-25	Glass-Bluebird TC/2000 Left GB
GB482054-5	Glass-Bluebird TC/2000 Left GB
GB482055-25	Glass-Bluebird TC/2000 Left GT
GB482056-25	Glass-Bluebird TC/2000 Right GB
GB482056-5	Glass-Bluebird TC/2000 Right GB
GB482057-25	Glass-Bluebird TC/2000 Right GT
GB482057-5	Glass-Bluebird TC/2000 Right GT
GB482030-25	Glass-Bluebird All American
GB482030-5	Glass-Bluebird All American
GB48202-25	Glass-Bluebird Conventional
GB48202-5	Glass-Bluebird Conventional



**Air Cleaners  
Bumpers  
Charge Air Cooler  
Condensers  
Grilles  
Grille Parts  
Headlights  
Hoods  
Fuel Tanks  
Mirrors  
Handles  
Exhaust  
Fenders  
Hood Springs  
Cooling  
Rubber Components  
Windshields**

**Distributed Exclusively by PACCAR Parts**

**ICRCUSCAPB04-22**